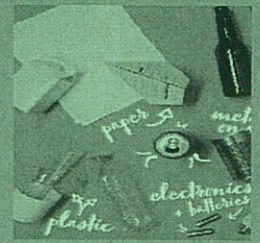




TOWN OF WILTON RECYCLING



Glass: Bottles/Jars of any color (Rinse Clean)

- DO NOT INCLUDE - ceramics, coffee cups, dishes, light bulbs, Pyrex, drinking glass, or window glass
- Goes in designated bins

Tin & Aluminum Cans (Rinsed Clean)

- Aluminum cans, pie plates, trays, tin cans and lids, clean aluminum foil, coffee, soup, vegetables, tuna, fruit, and pet food cans.
- Goes in Recycle Roll-off

Plastic: Bottles and Jugs #2 Only (Rinsed clean)

- Anything with #2 code symbol on the bottom (milk, water, bleach, detergent, anti-freeze) remove caps. Drain all the bottles and jugs. Flatten would be nice.
- DO NOT INCLUDE – oil bottles, plastic bags, butter tubs, cool whip tubs, cool whip tubs, pails or toys, bottles you can see through like glass no caps
- Goes in recycle roll off

Newspaper, Magazine, catalogs, Telephone Books

- All of these items can be recycled together, including the glossy supplements that come with the paper.
- DO NOT INCLUDE mixed paper or cardboard
- Goes in Recycle roll-off

Corrugated Cardboard

- All corrugated cardboard and brown paper bags.
- DO NOT INCLUDE newspaper, white paper, magazine, or mixed paper.
- Goes in Compactor box

Mixed Paper

- Junk mail, cereal boxes, letters, folders, white and colored paper, and bags, cards, post cards, calendars, checks, envelopes, other food and paper board boxes.
- DO NOT INCLUDE food-contained paper or paperboard products, no foil or glitter paper products, no magazines, newspaper or cardboard.
- Goes in Recycle roll off

Unacceptable items

- Plastic bags/film, stretch wrap, Styrofoam, ceramics, window glass, mirrors, light bulbs, dishes, hard/brittle plastic (i.e., monitors, keyboards, some children's toys)
- Goes in designated waste container(s) at the transfer station

For more information recycling, please contact:

Town Office:	207/645-4961
Wilton Transfer:	207/645-3731

Transfer Station Hours:

Sunday:	8:00 AM - 2:00 PM
Monday:	CLOSED
Tuesday:	8:00 AM - 2:00 PM
Wednesday:	10:00:00 AM - 5:00 PM
Thursday:	CLOSED
Friday:	CLOSED
Saturday:	8:00 AM - 2:00 PM